



File Name: 97 cavalier owners manual.pdf

Size: 4559 KB

Type: PDF, ePub, eBook

Category: Book

Uploaded: 13 May 2019, 20:54 PM

Rating: 4.6/5 from 648 votes.

Status: AVAILABLE

Last checked: 9 Minutes ago!

In order to read or download 97 cavalier owners manual ebook, you need to create a FREE account.

[**Download Now!**](#)

eBook includes PDF, ePub and Kindle version

[Register a free 1 month Trial Account.](#)

[Download as many books as you like \(Personal use\)](#)

[Cancel the membership at any time if not satisfied.](#)

[Join Over 80000 Happy Readers](#)

Book Descriptions:

We have made it easy for you to find a PDF Ebooks without any digging. And by having access to our ebooks online or by storing it on your computer, you have convenient answers with 97 cavalier owners manual . To get started finding 97 cavalier owners manual , you are right to find our website which has a comprehensive collection of manuals listed.

Our library is the biggest of these that have literally hundreds of thousands of different products represented.



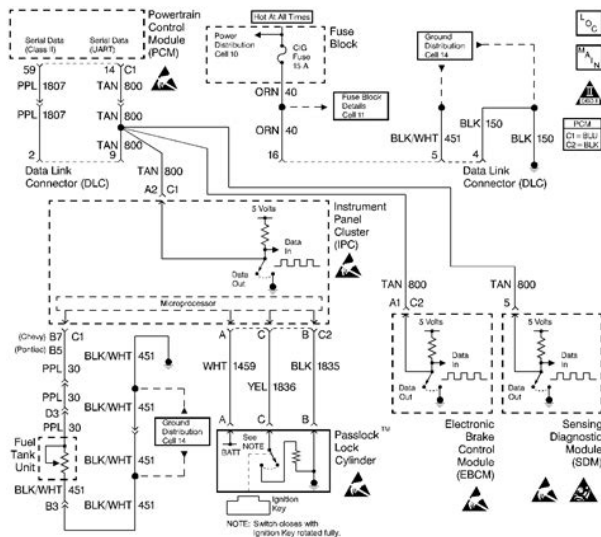
Book Descriptions:

97 cavalier owners manual

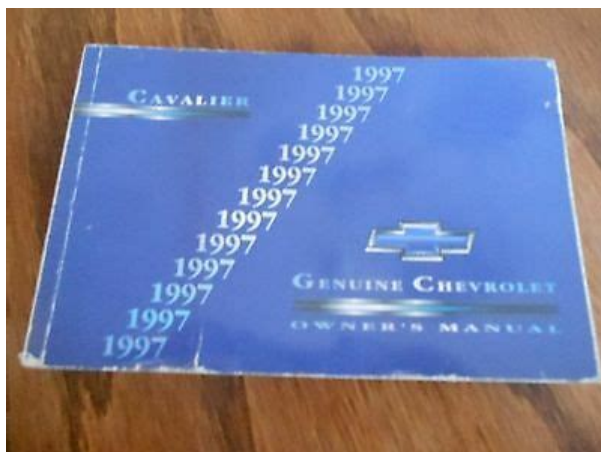


Please try again. Please try again. Then you can start reading Kindle books on your smartphone, tablet, or computer no Kindle device required. In order to navigate out of this carousel please use your heading shortcut key to navigate to the next or previous heading. To calculate the overall star rating and percentage breakdown by star, we don't use a simple average. Instead, our system considers things like how recent a review is and if the reviewer bought the item on Amazon. It also analyzes reviews to verify trustworthiness. This section tells what to do you have a problem while driving, such as a flat tire or overheated engine, etc. ifAux proprietaires canadiensVous pouvez vous procurer un exemplaire de ce guide en francais chez votre concessionnaire ou au DGN Marketing Services Ltd. 1500 Bonhill Rd. Mississauga, Ontario L5T 1C7Its an alphabetical list of whats in the manual, and the page number where youll find it. These mean there is something that could damage your vehicle. When you read other manuals, you might see CAUTION and NOTICE warnings in different colors or in different words. Youll also see warning labels on your vehicle. Here are some other symbols you may see Here youll find information about the seats in your Chevrolet and how to use your safety belts properly. Manual Front Seats Manual Lumbar Support If Equipped. The manual lumbar support control is located at the front of the drivers seat, toward the right. Turn the knob clockwise or counterclockwise to increase or decrease the amount of support your lower back. The front seatback folds forward to let people get into the back seat. To fold a front seatback forward, lift the latch located on the lower back side of the seatback. Then the seat will fold forward. Head Restraints. Folding the Rear Seat. If an easy entry right front seat isnt locked, it can move. In a sudden stop or crash, the person stop sitting it, be sure to push rearward on an easy entry seat to be sure it is locked. <http://100yen-mart.com/userfiles/epmotion-5075-operating-manual.xml>

- **1997 chevy cavalier owners manual, 1997 chevrolet cavalier owners manual, 97 cavalier owners manual, 97 cavalier owners manual pdf, 97 cavalier owners manual free, 97 cavalier owners manual download, 97 cavalier owners manual transmission.**

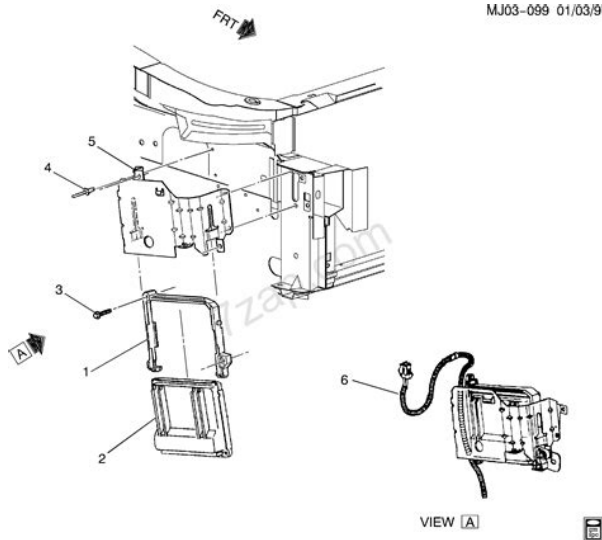


This part of the manual tells you how use safety belts to properly. It also tells you some things you shouldnot do with safety belts. And it explains the Supplemental Restraint System SRS, or air bag system. In most crashes buckling does up matter. a lot! Why Safety Belts Work. Suppose just a seaton wheels. its. Put someone on it. Then stop the vehicle. The rider doesnt stop. In a real vehicle, it could be the windshield. You get more timeto stop. You stop over moredistance, and your strongest bones take theforces. Thats why safety belts make such good sense. But you can unbuckle safety belt, a belts not insteadof them. Everyair bag system ever offered for sale has required the use of safety belts. Well start with the driver position. Driver Position. This part describes the drivers restraint system. Pull up on the latch plate tomake sure it is secure. These parts of the body are best able to take belt restraining forces. Adjust the height that the shoulder portion the so of belt is centered on your shoulder. You can be seriously hurt jour shoulder belt is too loose. In a crash, would move forward you too much, which could increase injury. The shoulder belt should against yourbody. fit You can be seriously injured if your belt is buckled in the wrongplace likethis. In a crash, up the belt would go over your abdomen. The belt forceswould be there, not at thepelvic bones. This could cause serious internal injuries. Always buckle your belt into the buckle nearest you. Whats wrong with this You can be seriously injured by twisted belt. In a a crash, you wouldnt have the full width of the belt to spread impact forces. To unlatch the belt, just push thebutton on the buckle. The belt shouldgo back out of the way. Before you close the door, be sure the beltis out of the way. Supplemental Restraint System SRS. This part explains the Supplemental Restraint System SRS or air bag system. The system checks the air bag electrical system for malfunctions. <http://davidhamacher.com/userfiles/epmotion-5075-user-manual.xml>



The light tells you if there is an electrical problem. Where are the air bags. The driver's air bag is in the middle of the steering wheel. Air bag inflation doesn't possibly affect other parts. The service manual for your vehicle covers the need to replace other parts. Air bags affect how your Chevrolet should be serviced. There are parts of the air bag system in several places around your vehicle. You don't want the system to inflate while someone is working on your vehicle. Here's how to wear properly. one. The shoulder belt may lock you pull the belt across if you very quickly. If this happens, let the belt go back slightly to unlock it. Then pull the belt across you more slowly. Make sure the release button on the buckle is positioned you so would be able to unbuckle the safety belt quickly if you ever had to. The shoulder belt should go over the shoulder and across the chest. These parts of the body are best able to take belt restraining forces. Rear Safety Belt Comfort Guides for Children and Small Adults. Then, place the guide over the belt, and insert the edges of the belt into two of the slots of the guide. Pull the guide upward expose its storage to clip, and then slide the guide onto the clip. To make the belt no part of a lap/shoulder belt. Smaller Children and Babies The instructions for the restraint will say whether it is the right type and size for your child. CAUTION Continued. Secure the baby in infant restraint. A baby doesn't weigh much until a crash. The instructions that come with the infant or child restraint will show you how to that. do If your vehicle is not convertible and you need to have an anchor installed, you can ask your Chevrolet dealer top strap, and that the strap be anchored. See the earlier part about the top strap if the child restraint has one. Follow the instructions for the child restraint. See the earlier part about the top strap if the child restraint has one.

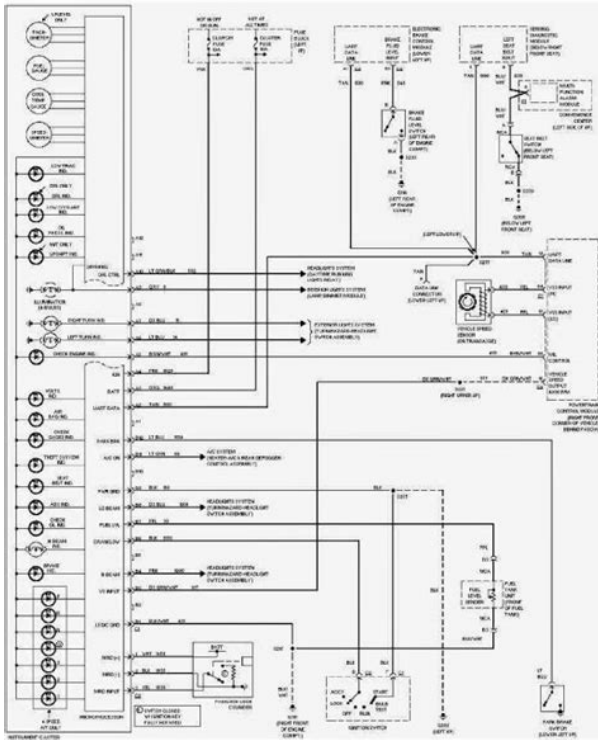
Follow the instructions for the child restraint. To remove the child restraint, just unbuckle the vehicle's safety belt. It will be ready work belt quickly if you ever had to. 6. To tighten the belt, pull its free end while you push down on the child restraint. See the earlier part about the top strap if the child restraint has one. To remove the child restraint, unbuckle the vehicle's just safety belt and let go back all the way. If you have the choice, a child should sit next to a window so the child can wear a lap/shoulder belt and get the additional restraint a shoulder belt can provide. Accident statistics show that children are safer if they are restrained in the rear seat. If the child wears the belt in this way, in a crash the child might slide under the belt. The belt's force would then be applied right on the child's abdomen. If an air bag inflates, you'll need replace air bag to Now and then, make sure the safety belt reminder light system parts. See the part on the bag system earlier in air and all your belts, buckles, latch plates, retractors and this section. A child or others could be badly injured or be even killed. They could operate power windows or other controls or even make the vehicle move. Don't leave the keys in a vehicle with young children. You may even have to damage your vehicle to get in. So be sure you have extra keys. Wear safety belts properly, lock your doors, and you will be far better off System to unlock your vehicle. Rear Door Security Lock 4DOOR Models. Your Chevrolet is equipped with rear door security locks that help prevent passengers from opening the rear doors of your car from the inside. If your Chevrolet has this option, you can lock and or unlock trunk about your from 3 feet 1 m up to 30 feet 9 m away using the remote In addition, the system illuminates the interior lights for a set period of time. You can match your transmitter to as many 1997 General Motors vehicles as you own, as long as they have the same remote Keyless Entry System.



<https://ayurvedia.ch/bose-wave-radio-model-awrcc1-manual>

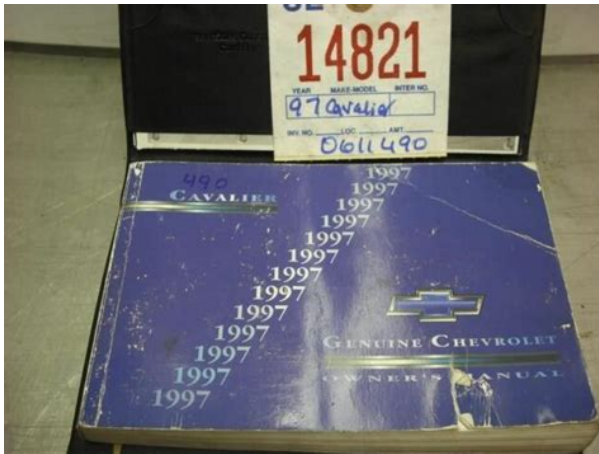
Contact your dealer for assistance with this. Battery Replacement Make sure the cover is on tightly, water won't get in. So that will force outside air into your vehicle. If you have air outlets on or under the instrument panel, open them all the way. See your Chevrolet dealer for service. If the THEFT SYSTEM light comes on while the engine is running, a problem has been detected and the system may need service. See your dealer for service. Press in the ignition switch you turn the top of it toward you. Note that even if the engine is not running, the positions ACCESSORY and RUN are on positions that allow you to operate your electrical accessories, such as the radio. If you do, you could damage the transaxle. Shift to PARK P only when your vehicle is stopped. Manual Transaxle. The gear selector should be in NEUTRAL N. If you add electrical parts or accessories, you could change the way the engine operates. Before adding electrical equipment, check with your dealer. And the excessive heat can damage your starter motor. If you add electrical parts or accessories, you could change the way the engine operates. You'll get easier starting and better fuel economy during engine warmup. How long should you keep the coolant heater plugged in. The answer: at least 15 amps. Automatic Transaxle Operation. It's the best position to use when you start your engine because your foot is firmly on the brake pedal, your vehicle could move very rapidly. You can use SECOND 2 on hills. It can help control your speed as you go down steep mountain roads, but then you would want to use also your brakes off and on. THIRD 3 This position is also used for normal driving, however, it offers more power and lower fuel economy than AUTOMATIC OVERDRIVE D. Manual Transaxle Operation REVERSE R To back up, press down the clutch pedal and shift into REVERSE R. This light will show you when to shift to the next higher gear for the best fuel economy.

<https://www.acnovate.com/images/canon-powershot-sx1-is-manual-download.pdf>



In Canada, the UpShift Light will not be functional on vehicles with the 2.2L engine. To release the parking brake, hold the brake pedal down. Pull the parking brake lever until you can press the up release button. Torque Lock Automatic Transaxle. If you are parking on hill and you don't shift your transaxle into PARK P properly, the weight out of PARK P before you release the parking brake. Your Chevrolet has a brake transaxle shift interlock. You have to fully apply your regular brakes before you can shift from PARK P when the ignition is in the RUN position. Don't park over papers, leaves, dry grass or other things that can burn. Engine exhaust can kill. It contains the gas. It's better not to park with the engine running. But if you ever have to. Windows. On a vehicle with manual windows, use window cranks to open and close each window. Power rear passengers from opening and closing the windows. Move the steering wheel to a comfortable level, then release the lever, lock the wheel in place, then release it. When the high beams are on, this light on the instrument panel will also be on. Windshield Wipers. Flash To Pass. This feature lets the lever to turn them off. If they're frozen to the windshield, carefully loosen or thaw them. Clear away the snow or ice to prevent an overload. Otherwise the washer fluid can form ice on the windshield, blocking your vision. When you apply your brakes, the clutch pedal or if you have a manual transaxle, the cruise control shuts off. Keep off the cruise control switch until you want to use it. This, of course, shuts off the cruise control. But you don't need to reset it. Ending Cruise Control There are several ways to turn off the cruise control. Step lightly on the brake pedal, or push the clutch pedal, if you have a manual transaxle, OR 0 Move the cruise switch to OFF. Daytime Running Lamps DRL can make it easier for others to see the front of your vehicle during the day.

<http://fradiomas.com/images/canon-powershot-sx100-is-manual-free-download.pdf>



DRL can be helpful in many different driving conditions, but they can be especially helpful in the short periods after dawn and before sunset. As with any vehicle, you should turn on the regular headlamp system when you need it. Use your fog lamps for better vision in foggy or misty conditions. Illuminated Entry. When stay on about for 15 seconds to provide an illuminated exit when you remove the key from the ignition. After you exit the vehicle and all can brighten or dim the instrument panel lights by turning the dial up or down. Battery Saver. Your Chevrolet is equipped with a battery saver feature designed to protect your vehicles battery. When the ignition is turned on again, battery power will be resupplied. The outside rearview mirror should be adjusted so you can just see the side of your vehicle when you are sitting in a comfortable driving position. Power Remote Control Mirrors If Equipped. The mirror control is located on the drivers door. Check your inside mirror or glance over your shoulder before changing lanes. To open the center console, pull the lever up and the lift lid back. To close the center console, push the lid down until it clicks. Unclip flat when you're not using it. Your vehicle may have a convenience net. You'll see it just inside the back wall of the trunk. If you do, it won't be able to back away from the heating element when it's ready. Even small items in the storage area can damage the top or other parts the system. Place the rear flap of the boot side ball stud D. Place the boot center cover along the trunk lid opening. Push the seat back to make sure is latched. It's the snap knobs up rearward to disengage the rear center cover. Raise the back of the boot side cover unhook the tab A to from the slot B in the quarter trim panel. Do the same on the other side. Be sure the top is securely latched. Raising the convertible top manually should only be done in an emergency and requires two people.

Before you do these steps, check to make sure that the bypass switch in the trunk is switched up to the NORMAL OPERATION position. If the power windows do not work, leave the doors open. 7. Position one person on each side the vehicle. Be sure the top is latched securely. Your Chevrolet is equipped with one of these instrument panel clusters, which include indicator warning lights and gauges that are explained the following pages. Be sure to read about those that apply the instrument panel cluster on to for your vehicle. Your Chevrolet has a tamper resistant odometer. If you see silver lines between the numbers, you'll know that someone has probably tried to turn back, so the set at zero be. its. Trip Odometer If Equipped This part describes the warning lights and gauges that may be on your vehicle. The pictures will help you locate them. Please follow this manual's advice. The light i tells you if there is an electrical problem. The system. If the air bag readiness light stays on after you start the engine or comes on when you are driving, your air bag system may not work properly. Then it should go out when the engine is started. Brake System Warning Light. Your Chevrolets hydraulic brake system divided into is two parts. If the traction control system is affected by an engine related problem, the system will turn off and the warning light will come on. Traction System is limiting wheel spin, this light will come on. Slippery road conditions may exist if the Enhanced Traction System active light comes on, so adjust your driving accordingly. Engine Coolant Temperature Gauge Your Chevrolet is equipped with a computer which monitors operation of the fuel, ignition and emission control systems. A few driving trips should turn the light off. Have you recently

changed brands fuel of. Check your oil as soon as possible and have your vehicle serviced. The oil light could also come on three other situations inif the light flashes, the Passlock system has entered a tamper mode.

<https://buddingheights.org/wp-content/plugins/formcraft/file-upload/server/content/files/162804f4cd8dff--Brunton-lander-df-stove-manual.pdf>

Here are four things that some owners ask about. None of these show a problem with your fuel gage. When the ignition is on, your fuel gage tells you about how much fuel you have left. At the service station, the gas pump shuts off before the gage reads FULL F. R. With these systems, you can control the ventilation and heating in your vehicle. Your vehicle also has the flowthrough ventilation system described later in this section. To turn the fan off, turn the mode knob all the way counterclockwise. In any other setting, the fan will run continuously. The fan must be on to run the air conditioning compressor. Some of the air goes to the floor ducts. The air conditioning compressor will run automatically this setting when it is needed to help dry the air in the vehicle. Air Conditioning Compressor Button. An engine coolant heater warms the coolant your engine and heating system use to provide heat. Your vehicle's flowthrough ventilation system supplies outside air into the vehicle when it is moving. Outside air will also enter the vehicle when the conditioning air fan is running. Ventilation Tips AM/FM Stereo If Equipped. Setting the Clock for Systems without Automatic Tone Control. Press SET. SET will appear on the display five for seconds. AM/FM Press the lower knob to switch between AM and FM. The display shows your selection. TUNE Turn the lower knob to choose radio stations. SEEK Press the right or left arrow to go to the next. AM/FM Stereo with Cassette Tape Player If Equipped. Playing the Radio VOLUME This knob turns the system on and off and controls the volume. The display shows your selection. TUNE Turn the lower knob to choose radio stations. The middle or will still play to not be in squarely. Set the volume at the desired level. Move the control ring behind upper the knob clockwise to adjust the SCV. Turn the so knob clockwise to increase treble and counterclockwise to decrease treble. When you use this control, the radio's AUTO TONE setting will switch manual.

If a station is weak or noisy, you may want to decrease the treble. The player is able to detect a tight broken tape, and or will eject the tape. The radio will go back to playing the last station selected. The player automatically the VOL, AUTO TONE, BAL, FADE, BASS and TREB controls just as you do. EJECT Press this button to remove the it soon as possible to as prevent damage to the tapes and player. To activate the bypass feature, the ignition must be Compact Disc Player and Automatic Tone Control If Equipped. Playing the Radio PWRVOL Press this knob to turn the system on and off. Move the control ring behind the upper knob clockwise to adjust the SCV. Then, as you drive, SCV automatically lightly so it extends. Turn it to choose radio stations. Turn the knob clockwise to increase bass and counterclockwise to decrease bass. When you use this control, the radio's AUTO TONE setting will switch to manual. TREB Press this knob lightly so it extends. Turn the knob clockwise to increase treble and counterclockwise to decrease treble. EJECT Press this button to remove the disc. Press RECALL to ERR off the display. LOC to indicate a locked condition anytime battery power is removed. Increase volume engine, Delco radio or other systems, and even damage them. Your vehicle's systems may interfere with the operation of sound equipment that has been added improperly. If the mast should become ever slightly bent, you can straighten it out by hand. If the mast is badly bent, as it might be by vandals, you should replace it. Drunken Driving. In recent years, some 17,000 annual motor vehicle related deaths have been associated with the use of alcohol, problem. The Blood Alcohol Concentration BAC of someone who is drinking depends upon four things There is a gender difference, Women generally have too. What if there's an emergency, a need to take sudden action, as when a child darts into the street. AntiLock Brakes. Your vehicle has antilock brakes ABS.

ABS is an advanced electronic braking system that will help prevent a braking skid. When you start

your engine, or when you begin to drive away, your antilock brake system will check itself. Here's how antilock works. Let's say the road is wet. Suddenly an animal in front of you. Using AntiLock. Don't pump the brakes. Just hold the brake pedal down and let antilock work for you. Enhanced Traction System If Equipped. You can turn the system back on at any time by moving the shift lever to any position other than FIRST or 1 SECOND 2. The Enhanced Traction System warning light should go off. Braking in Emergencies. With antilock, you can steer and brake the same at the same time. But you have to act quickly, and fast, just as the vehicle straddles the edge of the pavement. You all times and wear safety belts properly. If other cars are lined up to pass a slow vehicle, wait your turn. But take care that someone isn't trying to pass you as you pull out to pass the slow vehicle. But skids are always possible. The three types of skids correspond to your Chevrolet's three control systems. In the braking skid, your wheels aren't rolling. If your vehicle starts to slide, your foot off the ease Remember Any antilock brake system ABS conditions. Night driving is more dangerous than day driving. One reason is that some drivers are likely to be impaired by alcohol or drugs, with night vision problems, or by fatigue. Your eyes will have less trouble adjusting to night. But if you're driving, don't wear sunglasses at that way, it's easier to pick out dimly lighted objects. It's wise to keep your windshield wiper equipment in good shape and keep your windshield washer tank filled with washer fluid. Driving too fast through large water puddles or even going through some car washes can cause problems, too. Never drive through. Besides slowing down, allow some extra following distance. And be especially careful when you pass another vehicle. A traffic light is there because the corner is busy enough to need it.

Try to determine where you expect to blend with the flow. Try the gap at close to into the prevailing speed. Switch your turn signal, check on your mirrors and glance over your shoulder as often as necessary. Wiper Blades Are they in good shape. Fuel, Engine Oil, Other Fluids Have you checked all levels. Lamps Are they all working. Are the lenses clean Tires They are vitally important to a safe, trouble-free trip. Is the tread good enough for long distance driving. Then here are some tips Make sure your vehicle is well ventilated, with a comfortably cool interior. Keep your eyes moving. Scan the road ahead and to the sides. Check your rearview mirrors and your instruments frequently. Hill and Mountain Roads. These parts let to your engine assist your brakes on steep a downhill slope. Even though you have the antilock braking system, you'll want to begin stopping sooner than you would on dry pavement. Allow greater following distance on any slippery road. Put on extra clothing or wrap a blanket around you. If you have no blankets or extra clothing, make body insulators from newspapers, burlap bags, rags, floor mats anything you can wrap around yourself or tuck under your clothing to keep warm. Start the engine again and repeat this only when you feel really uncomfortable from the cold. But it as little as possible. Follow these steps Remove the labeled fuse CLSPCM. If you do, parts your vehicle can on break, or it can change the way your vehicle handles. These could cause you lose control, to Also, overloading can shorten the life of your vehicle. Try to spread the weight evenly. If you have fold-down rear seats, you'll find four anchors on the back of your wall trunk. You can use things, like suitcases, Consider using a sway control. You can ask a hitch dealer about sway controls. Don't tow a trailer at all during the first 1,000 miles 1 600 k m your new vehicle is driven. Your engine, axle or other parts could be damaged.

Be sure your vehicle's tires are inflated to the upper limit for cold tires. You'll bumper. Will you have to make any holes in the body of your vehicle when you install a trailer hitch. Because you have antilock brakes, not try do to tap into your vehicle's brake system. If you both do, brake systems won't work well, at all. or. Always back up slowly and, if possible, have someone guide you. Turn Signals When Towing a Trailer Do this so your trailer won't strike shoulders, soft curbs, road signs, trees or other objects. Avoid jerky check occasionally to be sure the trailer bulbs are still working. Each of these is covered in this manual, and the Index will help you find them quickly. If you're trailering, it's a good idea to review these sections before you start your trip. Here you'll find what to do about some problems that can occur on the road. Hazard Warning Flashers Other Warning Devices Jump Starting

Towing Your Vehicle Engine Overheating They let also let police know you have a problem. It must have a 12-volt battery with a negative ground system. Jump Starting. If your battery has run down, you may want to use another vehicle and some jumper cables to start your Chevrolet. Unplug unnecessary accessories plugged into the cigarette lighter. Turn off all lamps that aren't needed as well as radios. This will avoid sparks and help save both batteries. In addition, it could save your radio. Don't get it on you. If you accidentally get it in your eyes or on your skin, flush the place with water and get medical help immediately. A. Heavy Metal Engine Part. B. Good Battery. Try to have a Chevrolet dealer or a professional towing service tow your Cavalier. They can provide the right what was damaged. When the towing service arrives, let the tow operator know that this manual contains detailed towing instructions and illustrations. Do not use the vehicle's steering column lock for this. The transaxle should be in NEUTRAL N and the parking brake released.

These slots are to be used when loading and securing to car carrier equipment. Do not attach winch cables or J-hooks to suspension components when using car carrier equipment. Always use Thooks inserted in the Thook slots. These slots are to be used when loading and securing to car carrier equipment. Towing dolly required under front wheels when equipped with automatic transmission or damage will occur. Do not tow with sling-type equipment or rear fascia be damaged. Use wheel lift or car carrier equipment. Additional ramping may be required for car carrier equipment. Steam from an overheated engine can burn you badly, even if you just open the hood. If there's still no sign of steam, you can idle the engine for two or three minutes and get everyone out of the vehicle until it cools down. You may decide not to lift the hood but to get service help right away. A. Coolant Surge Tank with Pressure Cap B, Electric Engine Fan Engine damage from running your engine without coolant isn't covered your warranty. So use the recommended coolant. Watch out for the engine fan. By this time, the coolant level inside the coolant surge tank may be lower. Get the vehicle under control by steering the way you want the vehicle to go. It may be very bumpy and noisy, but you can still steer. Gently brake to a stop well off the road if possible. If lift and remove the cover. Then lift off the adapter and remove the spare tire. Your vehicle's jack and wheel wrench are stored in a foam tray. Remove the band around the jack. Carefully use the wedge end of the wheel wrench to pry it off. The front notch is 9 inches 23 cm back from the front wheel well. The rear notch is 8 inches 20 cm forward from the wheel rear well. Never get under a vehicle when it is supported only by a jack. Raising your vehicle with the jack improperly positioned can ground so there is enough room for the spare tire to fit. Then remove the flat tire.

Rust or dirt on the wheel, or on the parts to which it is fastened, can make the wheel nuts become loose after a time. If you do, the nuts might come loose. Your wheel could fall off, causing a serious accident. Be sure to use the correct wheel nuts. If you have to replace them, be sure to get new GM original equipment wheel nuts. In a sudden stop or collision, loose equipment could strike someone. Store all these in the proper place. E. Extension. The compact spare is for temporary use only. Replace the compact spare tire with a full-size tire as soon as you can. See the storage instructions label to replace your compact spare into your trunk properly. Check the inflation pressure tire repaired or replaced where you want. The compact spare can catch on get the rails. Your vehicle has an air bag system. Check with your Chevrolet dealer before adding equipment to the outside of your vehicle. Fuel. If fuels containing MMT are used, spark plug life may be reduced and your emission control system performance may be affected. The malfunction indicator lamp on your instrument panel may turn on. If this occurs, return to your authorized Chevrolet dealer for service. To check on fuel availability, ask an auto club, or contact a major oil company that business in the does country where you'll be driving. Don't use It can corrode it. When you put the cap back on, turn it to the right clockwise until you hear a clicking sound.

<https://skazkina.com/ru/bose-wave-radio-model-awrcc1-manual>