



File Name: Craftsman lawn mower eager 1 manual.pdf

Size: 1584 KB

Type: PDF, ePub, eBook

Category: Book

Uploaded: 28 May 2019, 15:27 PM

Rating: 4.6/5 from 683 votes.

Download Now!

Please check the box below to proceed.



I'm not a robot



reCAPTCHA
Privacy - Terms

Book Descriptions:

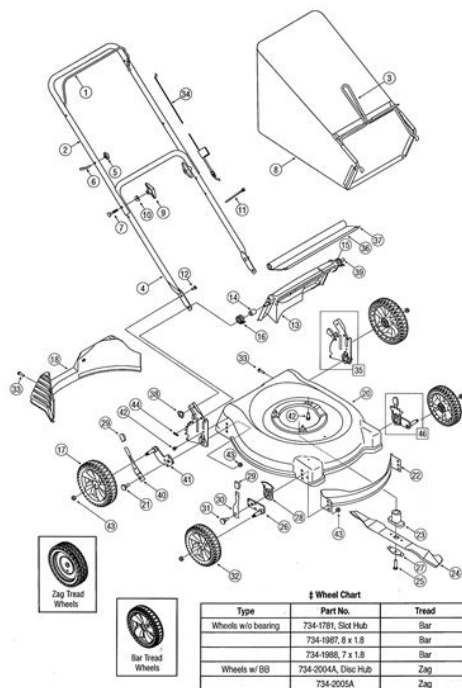
Craftsman lawn mower eager 1 manual



If this Craftsman Lawn Mower is. View online or download Craftsman 917.387600 Owners Manual. We have 1 CRAFTSMAN 917.387600 manual available for free PDF download Owners Manual Brand CRAFTSMAN. Reload to refresh your session. Reload to refresh your session. Sears Craftsman Eager 1 Owners Manual. Model Sears Craftsman Eager 1. Manufactured by Sears Craftsman. Owners Manual Format PDF Craftsman Eager 1 Manual. Model Craftsman Eager 1. Manufactured by Sears Craftsman Sears Craftsman Eager 1 Lawn Mower Manual. Model Eager 1 Manual. Manufactured by Sears Craftsman Sears Craftsman Eager 1 Lawn Mower Manual. Download Eager 1 Mower Manual. Craftsman Eager 1 Manual. Manufactured by Sears Craftsman Sears Craftsman Eager 1 Lawn Mower Manual. Model 917.377190 Eager 1 Manual. Manufactured by Sears Craftsman. Download Sears Eager 1 Manual Here Click here to check out our Parts Department. We may talk for hours and hours about pros and cons of reading about craftsman eager 1 lawn mower. But we wont do that here. CAUTION Read and follow all. We have parts, diagrams, accessories and repair advice to make your tool repairs easy. Thats where we come in. We have all the Craftsman mower parts you need in stock for when your lawn has taken a toll on your mower. Motors often wear out in lawn mowers, due to the strain caused by lack of proper maintenance. The Eager 1s manual lists each working part of the motor and informs the user of when to replace certain parts, like the spark plug or the oil. The only Sears made part that is available in Sears stores is the air filter, which fits all. Replaces Ariens 21546238, 21546299, AYP 187292, 192870, 532192870. Craftsman Eager 1 Manual. Share. Need Parts Click here to check out our Parts Supplier. Craftsman Eager 1 Manual Sears Craftsman Eager 1 Lawn Mower Manual Download Eager 1 Mower Manual Craftsman Eager 1 Manual Manufactured by Sears Craftsman. Get shopping advice from experts, friends and the community. Need Owners Manual. <http://www.lehrlingsmediation.info/images/content/food-network-7-qt-steamer-manual.xml>

- craftsman lawn mower eager 1 manual, craftsman eager-1 lawn mower manual pdf,

craftsman eager 1 lawn mower parts manual, craftsman eager 1 6.0 lawn mower manual, craftsman eager 1 6.75 hp lawn mower manual, 1.0, craftsman lawn mower eager 1 manual, craftsman eager-1 lawn mower manual pdf, craftsman eager 1 lawn mower parts manual, craftsman eager 1 6.0 lawn mower manual, craftsman eager 1 6.75 hp lawn mower manual.



7/11

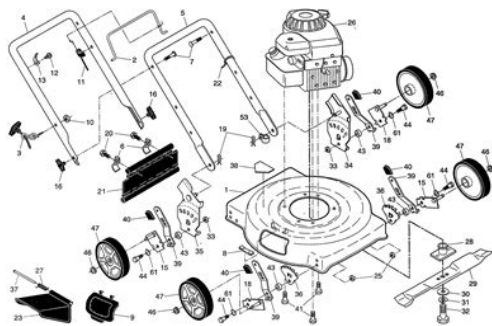
sims auction tractor trucks trailer classic cars and craftsman eager 1 lawn mower oil capacity carburetor kit parts,eager 1 lawn mower carburetor craftsman 55 manual user manuals songbook,craftsman eager 1 lawn mower oil capacity spark plug gap find more gas for sale at up to carburetor,eager 1 lawn.About the only maintenance that has been done to this mower is a couple of oil changes, a new blade, and fuel put in the tank. No problems or hassles. These may not be the most popular. Mulching as you mow might be a way to return nitrogen to your lawn and cut down on yard waste, but sometimes you just want to pick up those clippings. If your lawn is prone to thatch or first. Craftsman has dozens of walkbehind mowers in both gaspowered and electric models with hundreds of parts. Check your owners. Amazon.com Drive Control Cable Assembly For Craftsman, Poulan, 184588, 145755.You may read these. unternehmensratinginformationstableaurating pd 1, olainformes 2012comisi n jur dicaconsejo general de la abogac, foy 990 pf return of.I have been unable to find the manual online and that may help. I do not want to bring it to a repair shop, but that may be my next step. Also the carburetor does not have a manual choke as I expected, it only has a throttle valve. The main jet on a lawnmower is tiny, maybe.006 in. the owners manual, Sears will repair free of charge any defect in malarial or workman ship. I just got a craftsman lawnmower from my aunts estate. There is no manual. I need to know what kind of oil Answered by a verified Technician. 502 it says electric start high torque powerm 6.5 horsepower eager1 down below it says EZ option it has a cord but also has a red plastic like key on the handle. The mower belt broke. And no matter what part it needed, I had to carefully study a multipage schematic in my owners manual and decipher the exact part number before I could drive to Sears and try to buy a replacement part — even if all I needed was a new mowing blade.<http://canadianriversafety.com/userfiles/food-network-digital-thermometer-manual.xml>



Then, invariably, I'd discover. Craftsman is America's most trusted tool brand. View our selection of Lawn Mowers and product information here. Hi folks, I bought a Craftsman mower at the auction yesterday. If it's a front drive, the motor is between the front wheels on the deck. If it's a rear drive, the motor is between the rear two wheels. Pop the casing off with a flat screwdriver. Inside the casing, check the gears for any clogs. If you see any clogs, remove them with a. That information will be in the owner's manual for the engine. If it is a Briggs or Kohler it will be available as a free download. Whether you've got. Assembly Required Assembly Required. My old lawnmower was a refurbished Craftsman Eager1 I found on the side of the road and fixed up myself. **WARNING** Always read the engine and equipment manuals before starting, operating, or servicing your engine or equipment to avoid personal injury or property damage. Finally, if a lawn mower or tiller blade hits a rock or curb, the flywheel key can sometimes absorb the damage, reducing repair costs significantly. This is a fuel line for your lawn equipment. The line connects your fuel tank and carburetor. It delivers gas to the carburetor when needed. This part is made of clear, flexible rubber, and is 25 inches long. Depending on usage, overtime this part will crack and deteriorate, which is a hazard. If you notice visible damage on your. Tecumseh Service Manual Free download as PDF File .pdf, Text File .txt or read online for free. 3 to 11 hp 4cycle Lhead engines. This manual covers engine models ECV100 120, H22 80, HH40 70, HHM80, HM70 100. LHEAD ENGINES. Main Menu. CONTENTS CHAPTER 1 GENERAL INFORMATION. Craftsman Lawnmower For Parts Or Repair. Over the past 5 years I've kept this push-type leaf vac sear part number 987799600 with tecumseh engine working fairly well. Product Bradley Mowers. Shop our selection of Filters in the Outdoors Department at The Home Depot.

1 MY FIRST STEP REPLACING SIMPLE DISPOSABLE PARTS. As a matter of year-to-year maintenance, changing oil, air filters and spark plugs is important. On the Craftsman Model 917 model it's also easy and fast, requiring just screwdrivers and an appropriately sized wrench or socket for the spark plug. Take a look at. Tecumseh Service Manuals Find Tecumseh engine repair manuals, reference charts and other service manuals in PDF format below. The model and serial number of a Craftsman walk-behind mower is printed on a sticker located on the back of the deck, between the lower handle mounts. Look up your Craftsman lawn mower parts. We have a Craftsman mower with a Briggs and Stratton engine that we have not taken very good care of. Not only did we

not remove the gasoline before wintering it over, but we also did not maintain the air filter or spark plug. So it was not surprising that when we went to use it this spring it wouldn't start. However, with Google, Bing and Yahoo. This document special edition was completed with some very related documents like Craftsman Eager 1 mower manual, Craftsman mower manuals online, manual Craftsman lawn mower, Craftsman lawn mower engine parts, Craftsman zero turn mower. Please check these additional documents. Lawn mower repair manuals garden tractor. Craftsman Eager 1 diagram further Craftsman Eager 1 parts together with Richmond Craftsman engine parts furthermore. Craftsman Eager 1 diagram further Craftsman Eager 1 parts together with Richmond Craftsman engine parts furthermore. Linkages came off Craftsman Eager 1. Craftsman lawn tractor parts manual Craftsman lawn mower repair guide repair manual for Craftsman riding lawn mower riding lawn mower repair manual Craftsman walk behind lawn. If you are looking for. How can I obtain a repair manual for a Craftsman Riding Mower. Buy NEW IDEA CUT DITIONER OWNERS MANUAL at TractorHouse.com Page 1 of 1. Buy NEW IDEA CUT DITIONER OWNERS MANUAL at MachineryTrader.com Page 1 of 1.



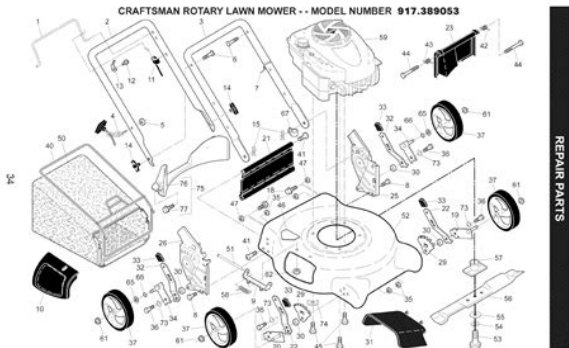
5/12

<https://formations.fondationmironroyer.com/en/node/12768>

Buy NEW IDEA CUT DITIONER OWNERS MANUAL at TruckPaper.com Page 1 of 1. You can unsubscribe at any time. You can unsubscribe at any time. Guts of a Truck. Craftsman Pro Series riding mowers and ZTRs offer cutting edge performance, strength, and durability. Check out some. Tough designs team up with cutting edge. Learn about the illustrious legacy that is CRAFTSMAN Tools and how it's helping to shape, mold, meld and forge our future. Follow us as we journey across America introducing new products and opening new. You can unsubscribe at any time. You can unsubscribe at any time. If the unit is. Users Guide Operating Manual Instructions Book Installation Manual Setup Guide Service Manual Repair Manual Shop Manual Looking for a manual on a Craftsman Eager 1. Having detailed information on your mower is great to have, especially if you are wanting to know further detailed information. The cutting blade for the Eager 1 is a 20 inch blade that can be replaced universally by any Craftsman brand blade. Tecumseh blades will fit on models newer than 1995. Sears has been a household name for a century. If the unit is. Users Guide Operating Manual Instructions Book Installation Manual Setup Guide Service Manual Repair Manual Shop Manual Looking for a manual on a Craftsman Eager 1. Having detailed information on your mower is great to have, especially if you are wanting to know further detailed information. The cutting blade for the Eager 1 is a 20 inch blade that can be replaced universally by any Craftsman brand blade. Tecumseh blades will fit on models newer than 1995. Sears has been a household name for a century. Login to post They sent my mower off for 2 months and when I picked it up the mower would not start. Now, whoever messed with the carburetor left an important piece off. I am sure they can help you out. If I could find the parts breakdown somewhere on the internet I could get the

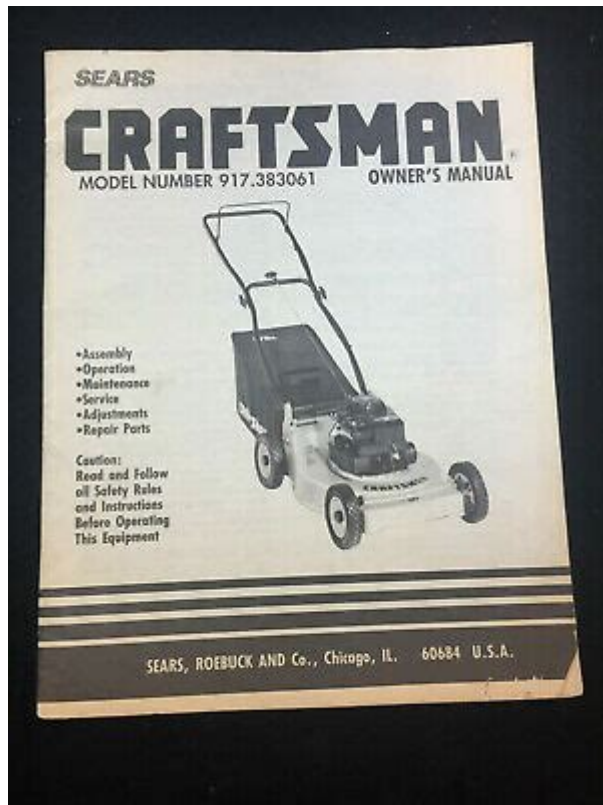
part ordered. So far I have come up with nothing.

<http://hsttechnologies.com/images/a-d-blood-pressure-monitor-manual.pdf>



Is this an error Contradicts everything else Ive read. Removed 3 bolts on impeller and auger bearings but assembly wont come out. Answer questions, earn points and help others. Send a Houzz Gift Card. Anyways I got it cleaned out and I literally had to pry the float needle out with all my strength. Have you guys ever heard of this. I dont want to put it back together until I am positive there is no hole in it. A dealer will be able to determine what carb parts it needs. I found the Serial number and the Model number but that was it. Do you think there is more jets, I still cant find one in the bolt on the underside of the float bowl Definitely paint out that green thing and then add an accent color for the wall with the cabinet stake it all the way over to where your table is. Pick some color that compliments the red draperies, maybe a nice grey to also pick up the black of your appliances or the color of your counters, perhaps a somewhat darker shade. Then also paint the various outlet colors the color of the backsplash. They really modernized my kitchen that previously had white knobs with painted flowers from the 60s. I cleaned the old ones up and donated the whole bunch of 50 to Goodwill. So, you might find something at Ikea or Goodwill. Check out Habitat for Humanity ReStores someone might have donated nice ones there. Take one to the hardware store and ask the friendly paint guy. Not Home Depot or Lowes, but a local hardware store such as Ace. See More Cant decide on floors for a whole house remodel, help. You bring up another great point. Industry standards on MASS produced product used to allow for 5% mismilled or slightly defective material, which was SUPPOSED to be considered for use as cutting waste or in closets, etc. When I 1st got into the trade, I worked with an old guy from New Jersey whod intentionally put ugly pieces in the middle of the entry or doorways.

<http://finrusinvest-global.com/images/a-designers-manual-bill-mollison.pdf>



As a manufacturer, the lesson I learned was how important it is to catch anything undesirable in OUR HOUSE the shop. I've tried to teach MY installers over the years that they need to learn to scrutinize every piece of flooring as they prepare to nail it in or set it in adhesive. Finally starting produce more of them again. Q Comments 34 Great fireplace. Could it be Rookwood. Does it work Love glass doorknobs and the narrow backplate indicates that it is probably around 193040s or so. Earlier doors had a wide backplate. The huge return air duct by the window indicates you had a gravity furnace at some time, which also fits the period. I would recommend an oldfashioned surface mounted deadbolt lock for the porch door. They are inexpensive and way easier to install than the kind that installs in the door. Im always interested in old houses. Do you mind sharing what part of town youre in. Pleasant Ridge perhaps. The carriage style door is popular and you should be able to get an insulated steel one with windows that are similar for a reasonable price. I prefer to see old sashes in houses rather than craft projects, but you could hang some in a window or suspended over the fireplace mirror as sort of a nod to the house history. Backpainted, they can be white boards, or can be used to frame sentimental collages and such, or used in a cabinet. Im sure Pinterest is full of ideas. Try to keep the old hardware and mechanisms too. That stuff is pricey and probably solid brass. Looks like you still have the original exterior doors. The Craftsman Blog has info on how to install sprung bronze weatherstripping for doors, which lasts about 100 years. If you already have some, try taking a butterknife or stiff putty knife and gently prying open the V portion a bit to get a tighter fit. It is your home and no one elses, you need to enjoy it the way you see fit, and not please those who dont agree with you.

I think maybe if you were to make some suggestions in the homes of those who are rude in their posts to you, and all your suggestions were perfect, they too would not change their minds. There is no need for being rude, and all contributors ideas are not always good either just because they can type, it does not mean they KNOW design. Look for the model number on the shroud. The entire number.type, code, model, serial, etc. Set the jet on the table with the hex nut facing down and threads up. Midway between the bottom of the threads and the hex nut will be a single hole drilled in from the side through to the center of the jet. Find it and clean it. No need to buy a new one, these clean up well. Clean the area with a pad and youll see it. Have you ever seen a bolt without a jet in it Some carbs have nonjetted bolts, but not yours. So I found a thing that looks like a decently

big hole, but it literally looks like straight brass. I don't understand how if it was a real jet it would look like that. Is there a better way to open up the jet than a pad and carb cleaner. Use a small wire like from a garbage bag tie. You must have a manual choke on the carb. There is one thing that could be it like I mentioned, but it literally looks like a possible circle of straight brass. Also there is only 4 threads on my bolt, not 5. Any ideas Its there!! Do you think that is the fuel pick up, and then when it goes into that tube, the bottom of the bolt acts as a main jet A lot of them had a teeny hole in the smooth section of the bolt The end that goes in first to hold the bowl in place! That hole is not readily seen, in the shank of the bolt, but it must be open for the engine to run. Or the part between the threads and the nut. Or the very top flat part It has a little bit of a circle drop at the bottom but not a solid deep hole like that.

<https://grupomarsamo.com/wp-content/plugins/formcraft/file-upload/server/content/files/16286c3936dc27---caddie-training-manual.pdf>

I noticed the carburetors on some Briggs and Stratton Quantoms do not have jets in the bolt at all, do you think this is possible No idea what it is. Some Briggs do not have a jet in the bowl nut, but they are just under the bowl nut. Wouldn't that be an idle jet, not a main jet, it is not very large While doing this I put a needle seat in grooved side down. And now I tried to put the float in and set it to the right level, but it is set extremely lean. I can't get it to go any lower. Any ideas There have been a few different, but not many. And, just be glad he doesn't have the type with the plastic bowl. I just threw one of them out into the woods last week, and junked the engine. I refuse to work on that type carb! Any ideas Is it possible they didn't bend the float enough from the factory Could this be the look for you. Full Story 41 CRAFTSMAN DESIGN Houzz Tour Bridging Past and Present in a California Craftsman By Fred Albert A Santa Monica bungalow says goodbye to gloominess and hello to a bright new look that mixes modern and traditional Full Story 128 LIFE You Showed Us 20 Nutty Home Fixes By Becky Harris We made the call for your BandAid solutions around the house, and you delivered. Featuring a fourcycle gasolinepowered engine, the Eager 1, like all mowers, requires routine maintenance so that it continues to perform properly. Changing the oil on a Sears Eager 1 is part of the routine maintenance and can be performed by many homeowners. Remove the spark plug wire from the spark plug before beginning the oil change. Remove the cap from the tank and tilt the mower to the side. Drain the gasoline from the mower into the container to help prevent gas from spilling while draining oil. Remove the top from the oil fill tube. Tilt the mower on its side so that used oil drains from the tube into the container on the ground. Allow as much oil as possible to drain from the mower. Pour SAE 30 motor oil into the oil fill tube.

www.edplace.com/userfiles/image/files/89-jeep-wrangler-manual-transmission-fluid.pdf

Fill the tube to the base of the threads inside the fill tube. Place the top back onto the oil fill tube. Connect the spark plug wire to the tip of the spark plug for operation. He has worked as an assistant athletic director, head coach and assistant coach in various sports including football, softball and golf. Dooley has worked for various websites in the past, contributing instructional articles on a wide variety of topics. Show Comments. There have been several different models of the Eager 1 over the years, though the most common still in service is the red version with the 22inch deck. All parts are available for these mowers, giving them a permanent lease on life. Cutting Blades The cutting blade for the Eager 1 is a 20inch blade that can be replaced universally by any Craftsman brand blade. Tecumseh blades will fit on models newer than 1995. The locking mechanism and screw size are different on models older than 1995. If the turning arm, which turns the cutting blade, begins to rust or is broken, it can be replaced by any model mechanism that has the same measurements. The Eager 1 series is not picky. The Sears Eager 1 is a gaspowered, manually propelled lawn mower. The locking mechanism and screw size are different on models older than 1995. Motor Parts Motors often wear out in lawn mowers, due to the strain caused by lack of proper maintenance. The Eager 1s manual lists each working part of the motor and informs the user of when to replace certain

parts, like the spark plug or the oil. The only Sears-made part that is available in Sears stores is the air filter, which fits all Eager 1 models no matter their age. The two-cycle oil can be purchased at almost any store that offers lawnmowers or weedeaters, and any brand of two-cycle oil will do. Some very old models of Eager 1 require oil and gasoline to be mixed. Not mixing the oil and gasoline will destroy the engine very quickly due to overheating.

Find the owner's manual for your Eager 1 by its original manufacturing date to determine whether you need to mix oil and gasoline. Spark plugs must be replaced at least once per year if the lawn mower is left outside, or there is any sign of corrosion on the plug. Motors often wear out in lawn mowers, due to the strain caused by lack of proper maintenance. The only Sears-made part that is available in Sears stores is the air filter, which fits all Eager 1 models no matter their age. Other Parts Other parts may be needed to keep your mower looking brandnew. Decks can often be salvaged from old mowers that are going to be thrown away, so long as they are 22-inch decks. Mowing bags are generally universal and can be purchased secondhand and attached to the mower for easy clean up. Handles are very difficult to replace and should be taken to a professional. All Rights Reserved. Please try your search again later. I would do that to make sure what wheel you should purchase. This wheel fits my mower, but not yours. Hope this helps. When I searched up above, 3 choices for your mower came up and one for a weed whacker. This wheel fits my mower, but not yours. Hope this helps. When I searched up above, 3 choices for your mower came up and one for a weed whacker. My mower is the 917.378772 and they work for it perfectly. Now, only if I could find replacement back wheels. Sears Lawn Mower 247.37033. Sears Self-Propelled Lawn Mower Owners Manual. Authorized This listing contains the following 1 mower, Bag, Manual. Craftsman 917.370714 Manual. View the Craftsman 917.370714 manual. The Craftsman 917.370714 rotary lawnmower features a 6.5 horsepower Briggs. Poulan 5.5 hp 24 in snow blower, like new. 40 in hydraulic lawn mower jack. Craftsman 6.5hp BlowerVac with bag. Manual floor model 8 ton log splitter. Use our model number locator tool, or download our engine numbering system fact sheet. It will be in the format XXXXXXXXX. If you only have a 5 digit number, add a 0 zero before the 5 digits.

It will be in the format XXXXXXXXXX. Please refresh and try again.

<https://congviendis.vn/vi/boss-masterlist-manual-download>