



File Name: criticare 504 user manual.pdf

Size: 1784 KB

Type: PDF, ePub, eBook

Category: Book

Uploaded: 16 May 2019, 18:38 PM

Rating: 4.6/5 from 641 votes.

Status: AVAILABLE

Last checked: 1 Minutes ago!

In order to read or download criticare 504 user manual ebook, you need to create a FREE account.

[Download Now!](#)

eBook includes PDF, ePub and Kindle version

[❑ Register a free 1 month Trial Account.](#)

[❑ Download as many books as you like \(Personal use\)](#)

[❑ Cancel the membership at any time if not satisfied.](#)

[❑ Join Over 80000 Happy Readers](#)

Book Descriptions:

We have made it easy for you to find a PDF Ebooks without any digging. And by having access to our ebooks online or by storing it on your computer, you have convenient answers with criticare 504 user manual . To get started finding criticare 504 user manual , you are right to find our website which has a comprehensive collection of manuals listed.

Our library is the biggest of these that have literally hundreds of thousands of different products represented.



Book Descriptions:

criticare 504 user manual



Sign in Forgot Password. My Bench Close Sign In Not A Member. Sign Up Join MedWrench OK name type Receive Summary Emails. CritiCare 504DX by CritiCare Download PDF Product Details Forums Documents Videos News Request a quote Request Parts Add to My Bench This site uses cookies. By continuing to browse the site you are agreeing to our use of cookies. Please review our Privacy Policy for more details. All Rights Reserved. Ergonomic design and intuitive operations. Fullfeatured audible and visual alarms ensure accurate extended, unattended monitoring. The optional fullyintegrated, internal printer produces high quality hard copies of graphic trends, tabular trends, and sleep summary reports. Sleep summary reports can be used to detect sleep apnea and requires no additional software. FORUMS View All 7 Ask a New Question 1 Reply Fort healthcare 2 years ago 2 years ago request manual request manual for 504dx Reply 0 Replies Stan Skaggs 2 years ago 2 years ago anyone have the software for this monitor Hi guys! Does anyone have the software for doing service on these monitors. My computer died and am looking for a copy.After that i tried again a few weeks later with the power supply but now it show sthat is connectedled indicating AC power but when pushing power button, screen only flashes a second then shut down. And after relying only in battery power, it does not even work. I suspect it may be the ERG inverter LPS0521, the TIP32 SILICON PNP SWITCHING TRANSISTOR or something else at the power supply. All capacitors seems fine, diodes and zener diodes look good, also measured them all. By continuing to browse the site you are agreeing to our use of cookies. Equipment of DatexOhmeda and GE might be identical. Support is not desired. Mindray PM60 Support is not desired. Nellcor Adhesive Sensor Support is not desired. Smiths Oximeter Support is not desired. Teledyne TED 200T Oxygen Monitor.<http://www.pm-property.pl/userfiles/fox-float-100-rlc-manual.xml>

- 1.0.



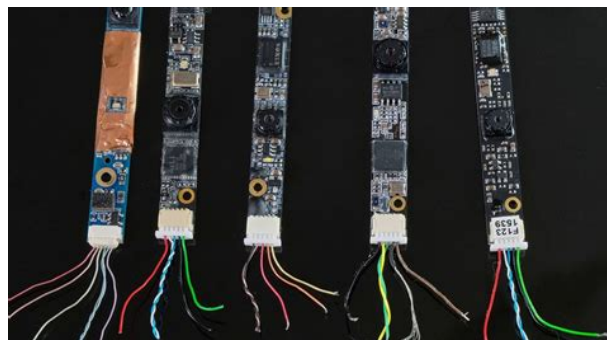
Exceptionally compact and portable with impressive capabilities at a surprisingly affordable price. Features Advanced SpO2 and heart rate monitoring from routine, periodic spotcheck measurements to extended, continuous and transport monitoring. Accommodate all of your patients from neonatal to adult with just one monitor. Unique DOX digital SpO2 technology for improved pulse recognition and artifact rejection. TM Audible and visual alarms provide instant notification. Optional printer, with userdefinable report formats. 24hour internal memory supports Profox Oximetry sleep study software. Built-in, rechargeable sealed lead acid battery ensures uninterrupted operation throughout patient transport or during power failure. The 504DX digital oximeter is exceptionally compact, lightweight, and designed for the way you work. The optional fullyintegrated internal printer produces high quality hard copies of graphic trends, tabular trends and sleep summary reports at userdefined intervals. Prices are indicative only and may vary by country, with changes to the cost of raw materials and exchange rates. Discover everything Scribd has to offer, including books and audiobooks from major publishers. Browse Books Site Directory Site Language English Change Language English Change Language. View cart now. The unique signal processing method that eliminates noise and interference from oxygen saturation measurements, even with no detectable pulse. Alarms caused by motion artifact or low perfusion are eliminated to ensure a valid SAO2 measurement. This monitor is ideal for neonate through all adult patients. By using our services, you agree to our use of cookies. For the best chance of winning, increase your maximum bid. Please check your email account for more details. You can contact the auctioneer on 01344 777850 for more information. To be sure to win, log in for the live auction broadcast on 09 dic. 2013 10 GMT or increase your max bid. <http://www.ethio3f.com/ehpea/userfiles/fox-float-120-rl-manual.xml>



We have thousands of new lots everyday, start a new search. Please register now so you are approved to bid when auction starts. Auctioneers may, at their sole discretion, without reason or notice of any kind, request a deposit from any Buyer before such Buyer may continue bidding during the auction. Bank wire transfers to the account of Canute will be accepted by prior arrangement only. All sales at the Auction are final. The balance of registration participation deposits are refundable after applying the same to any purchases. 2. All applicable sales, use, transfer or excise taxes arising from sale will be charged to Buyers, and will be added to the purchase price in accordance with UK law. 3. No purchases may be removed until after conclusion of the Auction and full settlement of payment, all purchase must be collected within 6 working days of Auction end. Interest will accrue on the balance of any unpaid purchase price annually at the lower of Ten Percent 10% or the highest interest rate allowed by law. Auctioneers reserve the right not to acknowledge or accept any bid which is merely a fractional advance over the preceding bid. Auctioneers further reserve the right to refuse any bid for any reason. It is Buyer's sole responsibility to provide proper safety devices and equipment or the means to meet all government safety standards or any other laws, including any environmental protection or other public protection laws or regulations. And therefore should avail them for personal inspection. All such information is given by way of identification only and no warranty, condition, representation or guarantee is made, given or is to be implied. An online premium of 3% will be added if purchased online. The Buyer's premium may be adjusted at Canute's discretion according to how the bid was placed and the purchase price was paid. 14. Equipment will not be released without a signed credit card receipt or invoice paid receipt. 15.

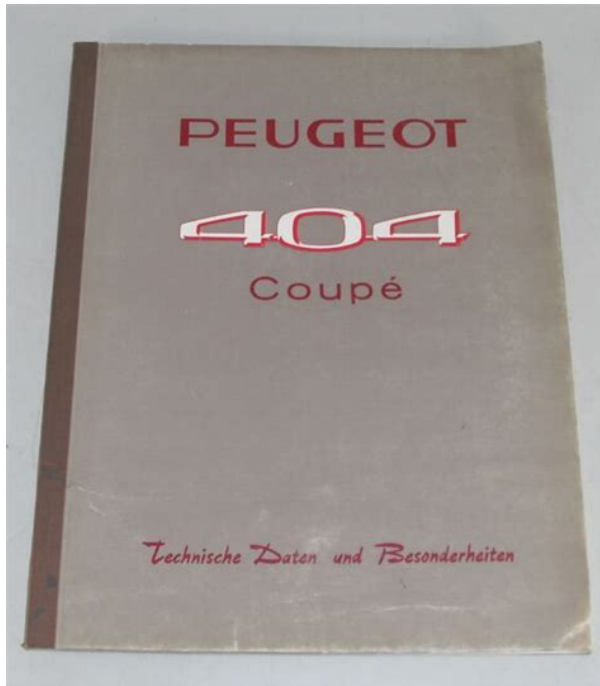
In the event Canute must enforce these terms of sale in a court of law they shall be governed by the laws of the United Kingdom excepting any conflict of laws or provisions which would serve to defeat application of UK law. Each of the parties to this Agreement hereby irrevocably and unconditionally A consents to submit to the exclusive jurisdiction of the courts of the United Kingdom for any proceeding arising in connection with this Agreement and each such party agrees not to commence any such proceeding except in such courts, and B waives any objection to the laying of venue of any such proceeding in the courts of the United Kingdom. 16. These Terms of Sale may not be changed, amended or modified except by Auctioneer, and Auctioneer may change, amend or modify these Terms of Sale at any time in writing or orally by announcement. 17. All buyers represent and affirm that they are legally allowed to purchase the items they bid on. 18. Auctioneer Reserves the right to have the buyer sign a secondary terms of seller in order to buy certain items from certain sellers. These terms are and will be available prior to bidding. Auctioneers may, at their sole discretion, without reason or notice of any kind, request a deposit from any Buyer before such Buyer may

continue bidding during the auction. These terms are and will be available prior to bidding. Exceptionally compact and portable with impressive capabilities at a surprisingly affordable price. With advanced DOX pulse oximetry and heart rate monitoring, the 504DX digital oximeter offers the reliability and ease of use that have put Criticare monitors in a class by themselves. Unique DOX digital SpO2 technology improves performance, even under the most challenging clinical conditions. In addition, the 504DX digital oximeter can store and print histograms for analysis of sleep summary data. Use up to 250 characters.



Heartland Medical About Us Staff Careers Sign Up Product News Medical Device Certificates by employee Images and copy are the property of Heartland Medical Sales and Services, LLC and shall not be copied in whole, or in part, without express written permission. Vital Signs MonitorPage iOperation ManualAll rights reserved. Reproduction of this manual is strictly prohibitedFor more information about MEDRAD productsPage iiContents. iii. In Case of Emergency Contact. xi. MEDRAD Subsidiaries. xi. International Offices. xi. Symbols. xiii. Regulatory Symbols. xiii. Safety Symbols. xiii. System Symbols. xiv. Port Symbols. xiv. Miscellaneous Symbols. xiv. Safety. xv. Definitions. xv. Warnings. xv. Cautions. xvii. Introduction. xxi. Description. xxi. Intended Use. xxi. Clinical Use. xxii. Section 1 Panel Features. Front Panel. 11. Menu Knob. 12. Color Display. 12. Water Trap and Gas Sampling Connection. 12. Left Side Panel Main Monitor. 13. Communication Port Main Monitor. 14. Main Monitor Base Connections. 15. Chassis Ground. 15. DC Connection. 15. Exhaust Port. 15. Air Intake Port. 15. Remote Display. 16. Printer. 18. Accessory Tray. 18. Veris 8600 Configurations. 19. Section 2 Monitor Setup. Battery Power. 21. Charging the Battery. 21. Battery Indicators. 22. System Start and Autocalibration. 23. Sensor and Probe Messages. 24. Gas Calibration. 24. Screen Display and Interface. 25. Waveform Slots. 26. Numerical Parameter Boxes. 29. Main Menu. 211. Alarm and Message Areas. 212. System Status Box. 212. Patient Information and Clock. 212. Keypad. 213. Softkey Functions Main Menu. 214. Changing Settings. 214. Saved Setting Profiles. 215. Page iiiALARMS Softkey. 216. Primary ALARMS Window. 217. Invasive Blood Pressure Alarm Settings.218. Agent Gas Alarms. 219. PARAMS Softkey Physiological Parameters. 221. Primary PARAMS Window.221. SpO2, Respiration, Temperature Menu. 224. Gas Settings. 225. DISPLAY Softkey. 227. Waveform Description. 227. Double Height Slots. 228.

<http://nylitigators.com/images/complete-diving-manual.pdf>



Cascaded Slots.229. Gain and Sweep. 230. Admitting and Discharging Patients. 231. Patient Information. 232. Procedure for Admitting a Patient. 232. Procedure for Discharging a Patient. 233. CONFIG Softkey System Configuration. 234. Password Protection. 235. Date Format. 235. Freeze Timeout.235. Standby Timeout. 235. Standby Tone. 235. Alarm Tone Warning. 235. Print Device. 235. Language Settings. 236. PRINT Softkey. 237. Default Settings. 238. Factory Defaults. 238. Section 3 Alarms and Messages. Alarm Description. 31. Remote Display Alarms. 31. Audible Alarms. 31. Visible Alarms. 32. Waveforms Frozen. 32. Alert Icons. 33. Special Alarm Conditions. 33. Alarms at Start Up. 33. Alarm Silence. 33. Alarms tone warning Warning Tone. 34. Alarm Volume. 34. Minimum Volume AutoReset. 34. Standby Mode. 35. Agent Standby Mode. 35. Standby Mode Timeout. 35. SpO2 Low Limit AutoReset. 35. SpO2 Low Limit Off Alarm. 35. Triggering an Alarm. 36. Alarms Testing. 36. Page ivAlarm Message List. 37. Shared Source Alarms. 37. ECG Alarms. 37. SpO2 Alarms. 37. Temperature Alarms. 38. NIBP Alarms. 39. IBP Alarms. 310. Capnometry CO2 Alarms and Messages. 311. Agent Gas Alarms and Messages. 311. Oxygen Monitoring O2 Alarms. 313. System Alerts. 314. Section 4 Trends. Description. 41. Trend Interval. 41. Capacity. 41. Trend Screen Update. 41. Trend Setup. 42. Graphical Trends. 44. Scrolling the Graph. 44. Interruption Due to Power Cycling or Standby Mode. 44. Graphical Trend Display. 45. Tabular Trends. 46. Tabular Trend Markers. 46. Trend Messages. 46. Data Format. 47. Clearing the Memory. 410. Section 5 ECG. Theory of Operation. 51. Heart Rate. 51. ECG Measurement. 51. ECG module. 52. Gating Signals. 53. ECG Monitoring Electrocardiogram. 54. Protection. 56. ECG Performance. 56. Electrode Selection. 56. ECG Module Interface. 57. ECG Module Ports And Switches. 57. Battery Condition. 58. Charging the Battery. 59. ECG Monitoring. 511. Patient Preparation. 511. Lead Placement. 512.

<http://mascotascostabrava.com/images/complete-control-program-manual.pdf>



Connecting Patient to the Monitor. 514. Completion of ECG Monitoring. 515. ECG Auto Lead Switching. 516. Primary Lead. 516. Alternate Lead Priority. 517. Gating Interface. 518. Page vSection 6 NIBP. Theory of Operation. 61. Heart Rate. 61. Description of NIBP Measurement. 61. NIBP Clinical Testing and Accuracy. 61. Cuff Inflation and Pressure Protection. 62. NIBP Monitoring. 63. Selecting Cuffs and Hoses. 65. Placing the NIBP Cuff. 66. Procedure. 67. Taking NIBP Measurements. 68. Section 7 SpO₂. Theory of Operation. 71. Heart Rate. 71. Definition. 71. Method. 71. SpO₂ Clinical Testing and Accuracy. 72. Gating Signals. 72. SpO₂ Monitoring Procedures Pulse Oximetry. 73. Attaching the Probe to the Monitor. 74. Attaching the Probe to the Patient. 74. Finger Probe Application for Adults. 76. Neonate Probe Placement. 77. SpO₂ Peripheral Gating. 710. Section 8 IBP. Theory of Operation. 81. Heart Rate. 81. Method of Measurement. 81. IBP Clinical Testing and Accuracy. 81. IBP Monitoring. 82. Invasive Blood Pressure Transducers and Interface Cables. 83. IBP Interface Cable. 83. IBP Monitoring Procedure. 85. IBP Safety. 86. Setup and User Calibration. 86. Zero Calibration Quick. 88. Clinical Use and Arterial Waveforms. 89. Section 9 Temperature. Theory of Operation. 91. Temperature Monitoring Procedures. 92. Directions for Use with Skin Surface Probe. 94. Preparing the Equipment. 94. Attaching the Temperature Probe to the Patient. 94. Page viSection 10 Anesthetic Agents. Theory of Operations. 101. Integrated CO₂ and Agent Gas Detector. 101. Agent Gas Measurement. 101. Gas Monitoring Procedures. 102. Sampling Circuit Connections. 102. Gas Monitoring Safety. 103. Water Trap. 104. Sampling Devices. 105. Intubated Patients. 105. Calibration and Startup. 106. Procedure for Gas Monitoring. 107. Occlusions. 107. Anesthetic Gas Exhaust Recovery. 107. Section 11 CO₂, O₂, and N₂O. Theory of Operation. 111. Respiration. 111. Capnometry Measurement of CO₂. 111. Measuring Oxygen O₂.

112. CO₂ Monitoring Procedure. 114. O₂ Monitoring Procedures. 115. Interfering Gasses for O₂. 115. N₂O Monitoring. 115. Section 12 Printing and Data Ports. Description. 121. Snapshot Size. 121. History Size. 121. Safety. 121. Print Modes. 122. Demand Print. 122. Continuous Print. 122. Alarm Print. 122. BP Print. 122. Interval Print. 122. Freeze Print. 122. Trend Print. 123. Print Formats. 124. Tabular Printing. 124. Graphical Printing. 124. Changing Printer Paper. 127. Data Output Ports. 129. COM1 Port. 129. COM2 Port. 1211. Video Port. 1211. CSV Data Format. 1212. Page viiAppendix A Maintenance. Cleaning and Disinfecting. A1. Pulse Oximeter Sensors. A2. Blood Pressure Cuffs. A2. Temperature. A3.

<http://www.onekaddy.com/wp-content/plugins/formcraft/file-upload/server/content/files/16287fe9c45160---camara-ip-super-client-manual-espa-ol.pdf>